

# STANDARD VS CLASSIC VIEW

Quick guide Version 2.0

ZAQSOLUTIONS

ILONA

SCOOlia

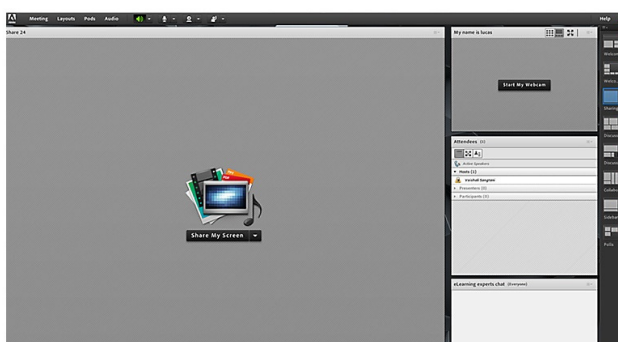
CONNECT ONLINE

**Standard View provides an enhanced Adobe Connect experience**

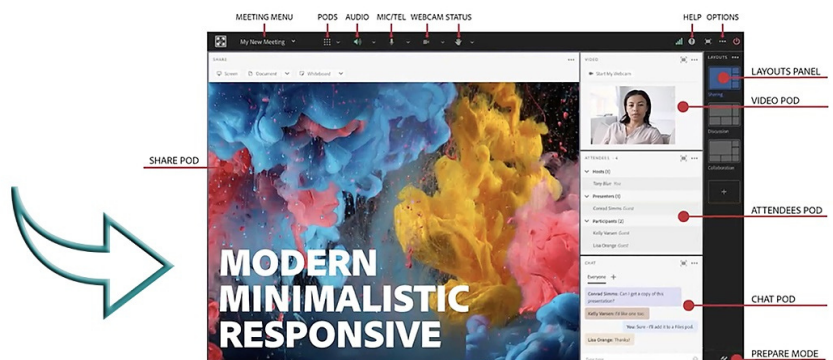
**At Connect Innovation, we recommend using 'Standard View'** for meetings and webinars as this new interface has a number of advantages over the older and slightly outdated 'Classic View'. In part, the design itself has changed and has therefore been given a more modern look, but there are also **several new features that have been added to the new 'Standard View'**, which makes the use of Adobe Connect an even better tool, including:

- Support for .gif image files
- Better overview when arranging layouts
- Improved and cleaner-looking whiteboards
- A new 'drag-and-drop' feature of files into share pods
- Better looking chat and notes pods
- Rotating participants during breakout sessions is now supported

Classic View



Standard View *New*



## Step 1: Enable the ability to use Standard View for all meeting rooms

The following steps assume that your user has administrative privileges. If you do not have administrative privileges, consult your site administrator:

Go to: Administration -> Compliance and Control -> HTML client settings and set at the red frame (Force Standard View). Then click Save.

All meeting rooms will now automatically appear with the Standard View interface.

PLEASE NOTE: If Use Enhanced audio is enabled, it will not be possible to:

- participate from mobile devices (a new mobile application is on the way), or
- save recordings as .mp4 (a new video codec is on the way)

Home | Content | Training | Meetings | Seminars | Event Management | Reports | Administration | My Profile

Account | Users and Groups | Audio Providers | Customization | Service Plan | Compliance and Control | Administration Dashboard

Pods Management | Share Settings | Recordings and Notice | Training Settings | Engagement Tracking | HTML Client Settings | Advanced Settings

### Application and browser interface settings

Force standard view (Recommended)

Use this to force Standard view across all rooms of this account. All attendees can either join from a modern browser in HTML Client or from the new desktop applications. Users can also join from the current mobile apps. Users joining from classic desktop applications will be shown an appropriate message to either join from a modern browser or update their application.

Use Enhanced audio\*

Use this option to use enhanced audio (Opus codec).  
\* Users will not be able to join from mobile apps.  
\* Make Offline (mp4) recordings will not be possible.

Force classic view (The option to use classic view will be removed soon)

Use this option If some of the users are on 32-bit systems and need to share their desktop screen. Note: This will force all attendees to join from Flash client in browser or from the classic desktop application.

Let the hosts decide for their room

Save Cancel

\*\*Using HTML client settings, you can force all meeting rooms to enable either Standard or Classic View. However, you can also leave it up to the individual meeting host to choose (yellow frame). Force Standard View is recommended as the selected option in most cases.

If you want the individual meeting participant to be able to choose between **Classic and Standard View** then place the mark next to the yellow frame and see the instructions on the next page **under Step 2**.

## Step 2: Select Classic / Standard View in each individual meeting room

If the settings on the solution allow the individual meeting host to choose between the two different views, you will have the following options in setting up the meeting:

### Application and browser interface settings

- 1  Standard view (Recommended)  
All attendees can either join from a modern browser in HTML Client, from the new desktop applications or from the current mobile apps. Users joining from classic desktop applications will be shown an appropriate message to either join from a modern browser or update their application.
- 2  Enable browser access
- 3  Use Enhanced audio\*  
Use this option to use enhanced audio (Opus codec).  
\* Users will not be able to join from mobile apps.  
\* Make Offline (mp4) recordings will not be possible.
- 4  Classic view (The option to use classic view will be removed soon)  
Use this option if some of the users are on 32-bit systems and need to share their desktop screen. Note: This will force all attendees to join from Flash client in browser or from the classic desktop application.

- 1) Click this option to select **Standard View**
- 2) **Enable the ability** to participate via browsers
- 3) Use the **enhanced audio feature**

### PLEASE NOTE: If Use Enhanced audio is enabled, it will not be possible to:

- participate from mobile devices (a new mobile application is on the way), or
- save recordings as .mp4 (a new video codec is on the way)

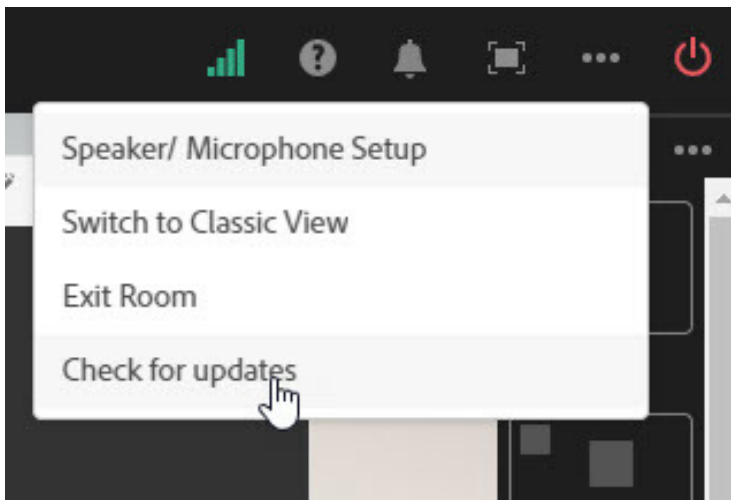
- 4) **Enable Classic View for the meeting room** (Classic View will be discontinued by Adobe Connect in mid-2021).

## Remember to update the Adobe Connect application regularly

**The Adobe Connect application** is regularly updated with improvements and fixes. It is therefore a good idea to check at regular intervals (eg once a month) whether you have installed the latest updated application.

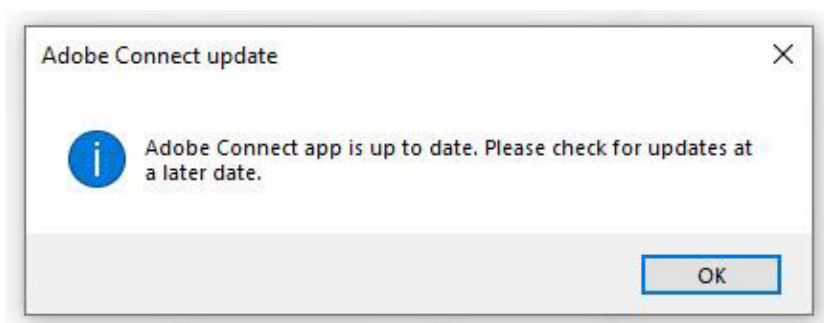
Fortunately, it is easy to do:

1. Click on the three dots in the upper right corner of the meeting room
2. Select 'Check for updates'



**\*\*Remember to regularly check for the latest version of Adobe Connect from the menu in the upper right corner.**

If your application is updated to the latest one, you will see this dialog box:



**\*\*If your application is updated to the latest one, you will see this dialog box.**

**For more information:**



**REACH OUR EXPERTS**  
SEND US A MESSAGE  
FOR ALL QUESTIONS YOU MIGHT HAVE

[Check our blog](#)

[Register to our webinar](#)

[Check our online courses](#)